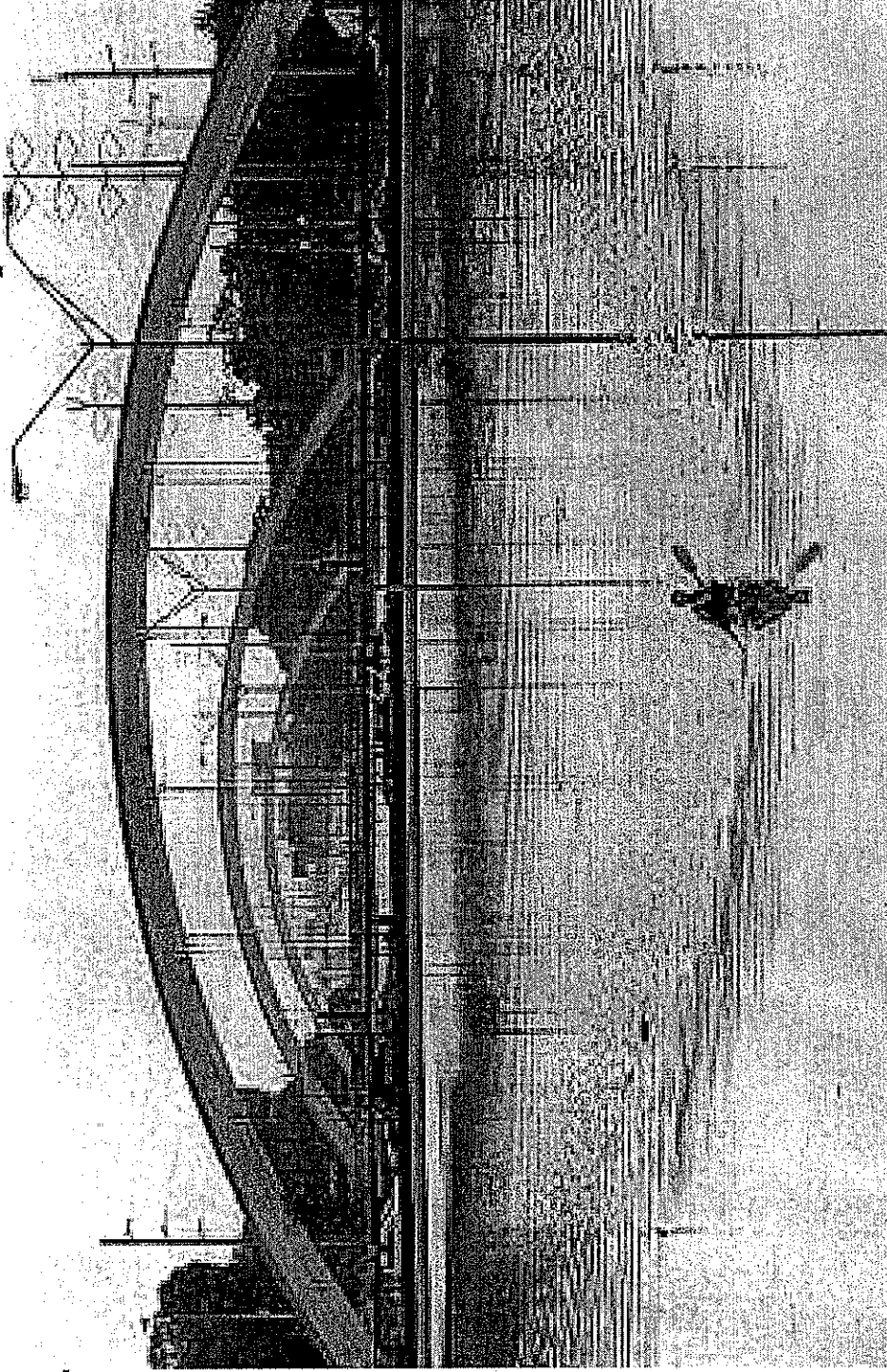


Kayaking on US 59, Houston (tropical storm Allison)



<http://www.chron.com/content/chronicle/special/01/flood/> - Source: Prof. Maidment

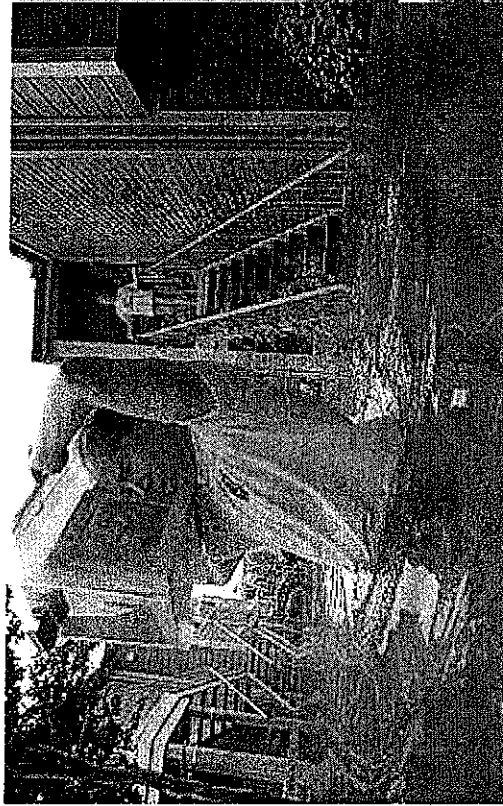
Residential flooding in tropical storm Allison



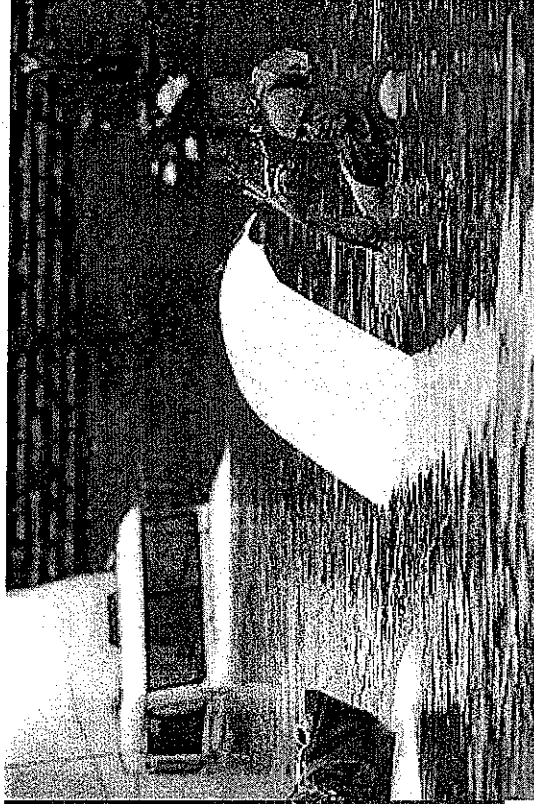
<http://www.chron.com/content/chronicle/special/01/flood/> - Source:

Prof. Maidment (UT)

The human cost



Saving the wedding photos



Cleaning out the car

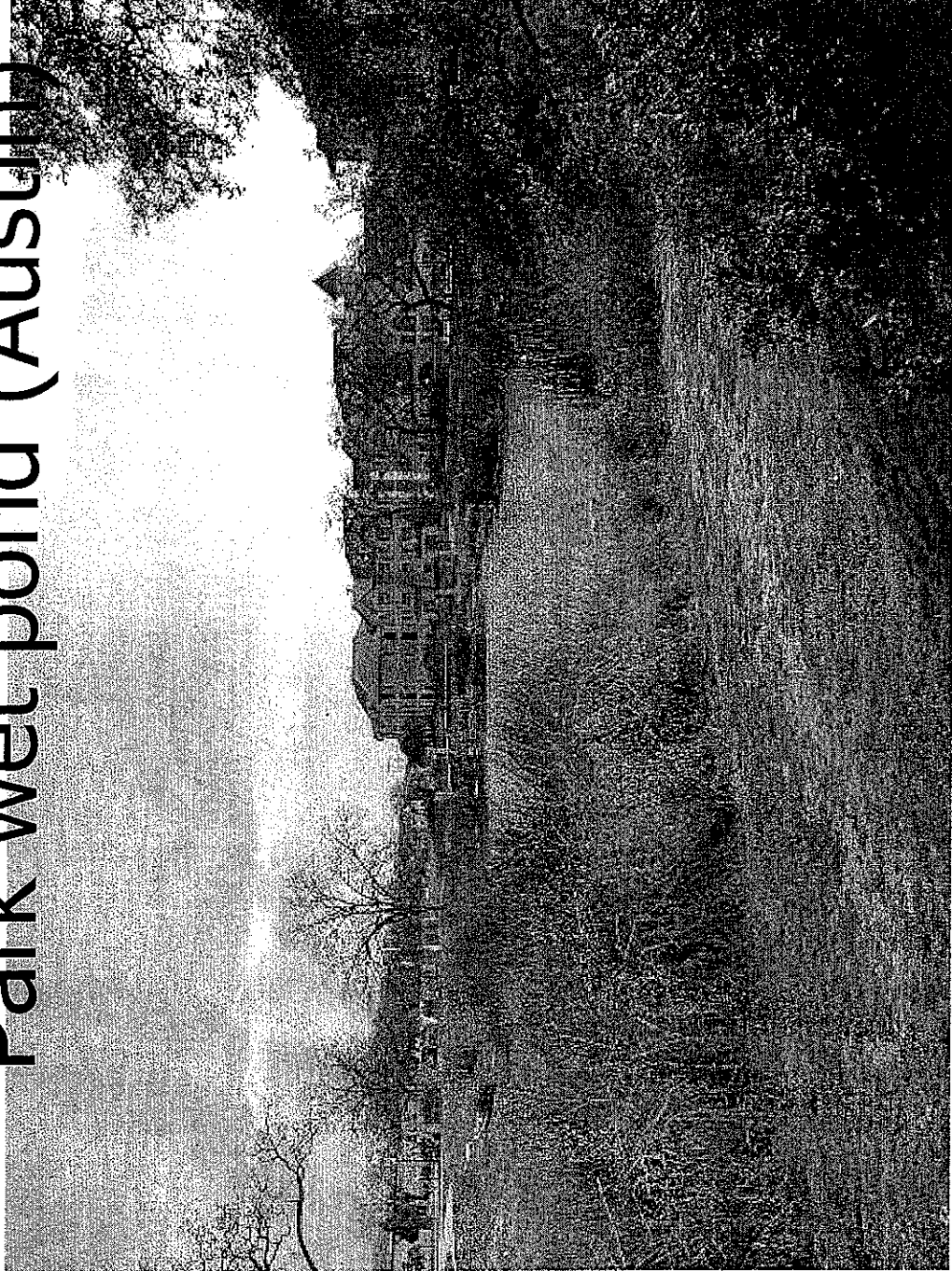
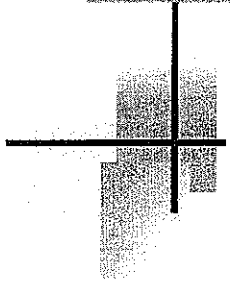
<http://www.chron.com/content/chronicle/special/01/flood/> -

Source: Prof. D. Maidment (UT)



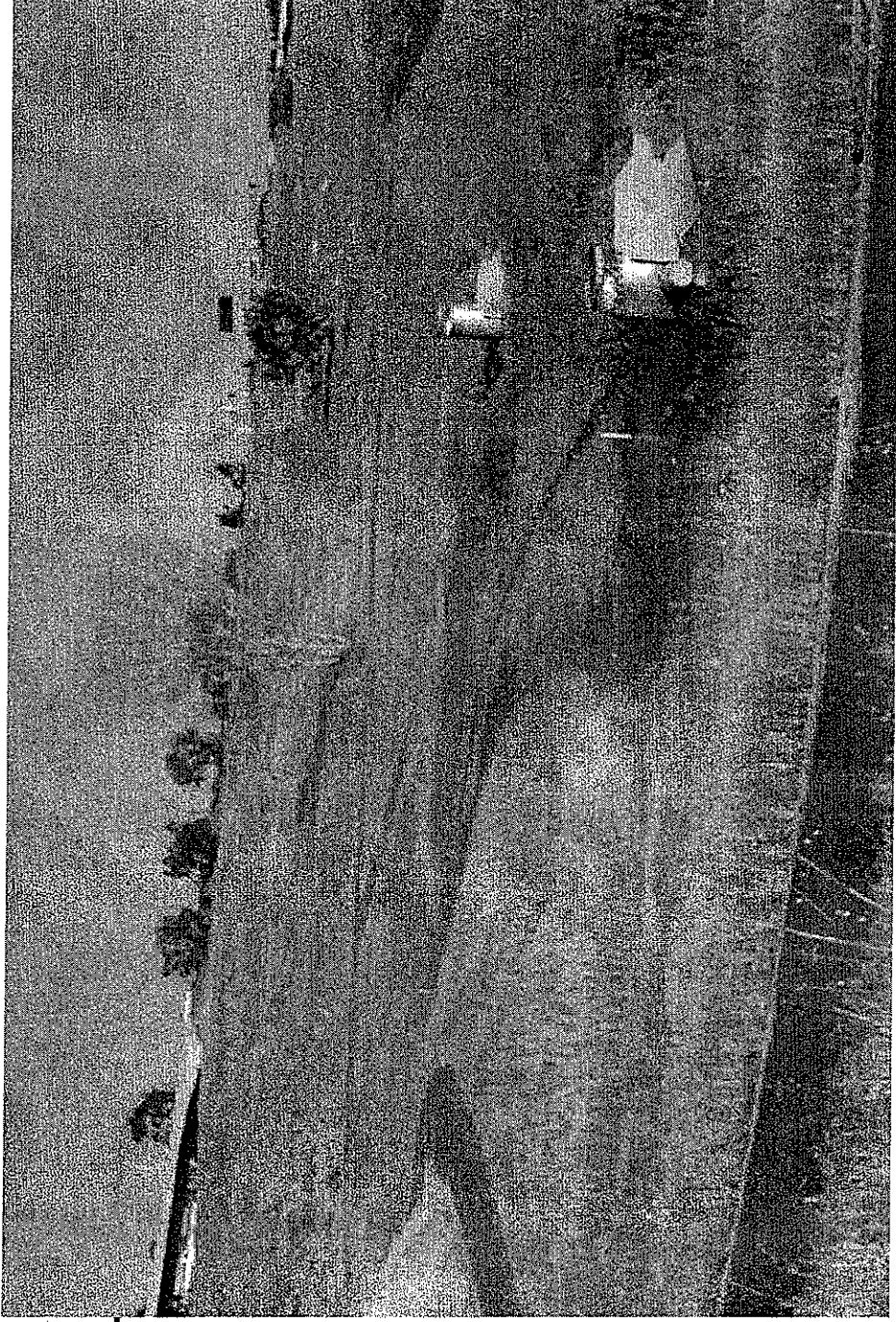
Flood wave passes the reach in 2-3 minutes

Measures against floods: Central Park wet pond (Austin)



Source: Prof. D. Maidment (UT)

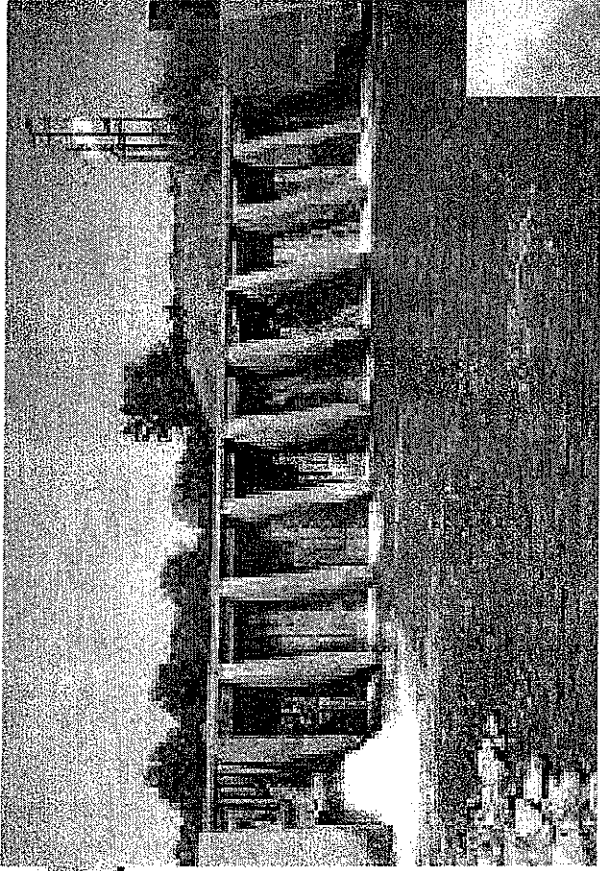
Extended detention basin



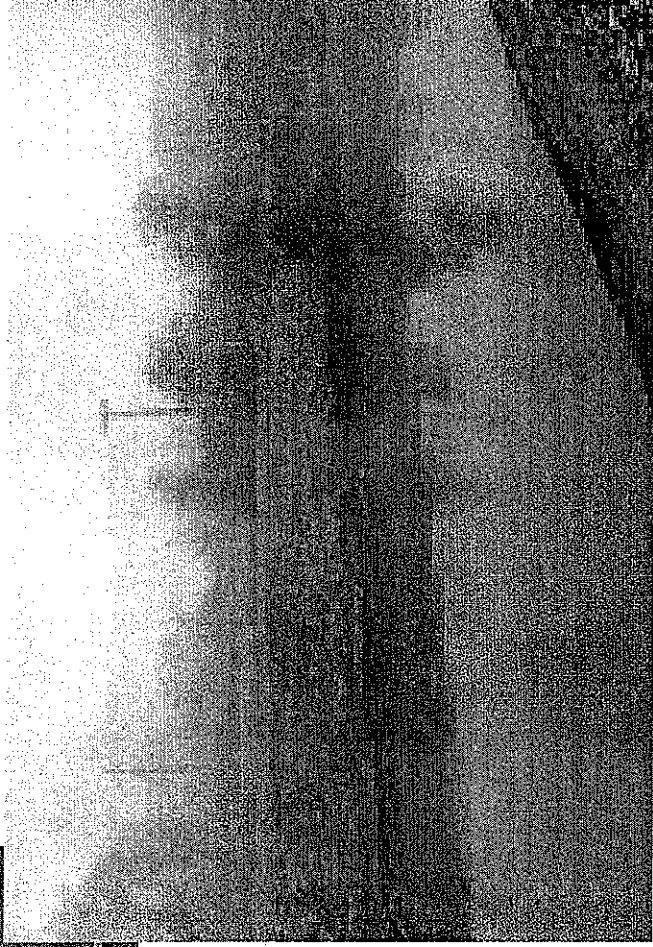
Source: Prof. D. Maidment (UT)

Rivers: Dam removal

Butte Creek, CA

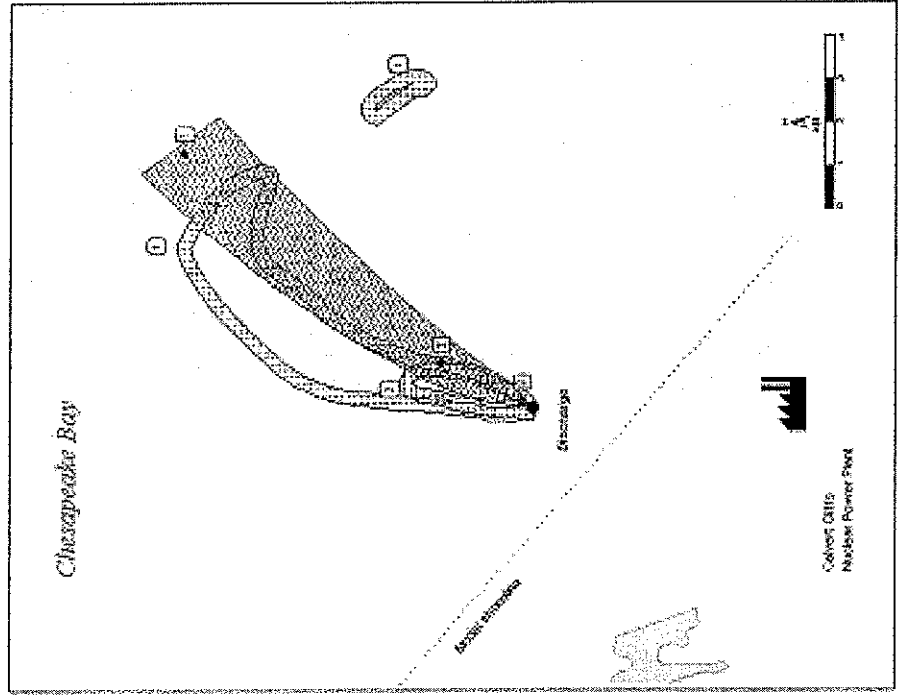


- 6 to 12 ft in height
- 100 ft in length
- Water diversion



- restored passage for the chinook salmon

Rivers: Discharge of heated water



The plume at Calvert Cliffs Nuclear Power Plant during ebb tide on May 12, 1978. Blue lines are 1°C delta-T measured isotherms with a 0.2°C uncertainty band. The red region is the thermal plume predicted by CORMIX. 1°C, 2°C and 3°C delta-T values are plotted for comparison